



EVANS & PARTRIDGE

FIELD VIEW
KING'S SOMBORNE, HAMPSHIRE













FIELD VIEW, ROMSEY ROAD, KING'S SOMBORNE, STOCKBRIDGE, HAMPSHIRE SO20 6PP

AN INDIVIDUAL DETACHED MODERN HOUSE PROVIDING EXCELLENT WELL APPOINTED FAMILY ACCOMMODATION TOGETHER WITH A SECLUDED WELL STOCKED GARDEN, SITUATED IN THE HEART THE VILLAGE BACKING ONTO THE PLAYING FIELDS

RECEPTION HALL • SITTING ROOM • FAMILY ROOM / OFFICE • GARDEN ROOM
KITCHEN / DINING ROOM • UTILITY ROOM • CLOAKROOM
PRINCIPAL BEDROOM WITH EN SUITE SHOWER ROOM • THREE FURTHER BEDROOMS (ONE EN SUITE) • FAMILY BATHROOM
GARAGE / WORKSHOP • PARKING • LANDSCAPED GARDENS

OFFERS INVITED AROUND £895,000 FOR THE FREEHOLD

DESCRIPTION

An individual detached family house, which was completed in July 2011, constructed of colour rendered elevations beneath a slate roof featuring hardwood double glazed windows and doors, stone lintel and sill details and oil fired central heating with radiators. The accommodation, which is not only well laid out, but also beautifully finished to a high standard, comprises a large central reception hall, a dual aspect sitting room with limestone fireplace, a separate spacious L-shaped family room (which could also provide an excellent home office), an impressive kitchen/dining room opening into the adjoining garden room, as well as a utility and cloakroom on the ground floor. On the first floor there is a generous central landing with doors leading to a master bedroom with en suite, a guest bedroom, also with en suite, two further double bedrooms and a family bathroom. Outside a gravelled drive provides parking and there is also a good size attached single garage/workshop with oak doors to front. The present owner who bought the property from new has completely re-landscaped and beautifully stocked the rear garden.

LOCATION

The property is situated in the middle of the popular village of King's Somborne, which offers everyday facilities including a Post Office/store, primary school, church and public house. The picturesque town of Stockbridge, traversed by the River Test, is just five minutes away to the north, the abbey town of Romsey is approximately seven miles to the south, and the cathedral cities of Winchester and Salisbury are both within about fifteen and twenty five minutes' drive respectively. There are also excellent road links to London and the West Country via the M3 and A303 and also to the South Coast.

ACCOMMODATION

Pitched covered ENTRANCE PORCH supported by an exposed corner pillar. Overhead light. Part obscure glazed door leading into:

Large central RECEPTION HALL. Turning staircase with two half landings and attractive, stained, solid oak turned style balustrade rises to first floor. Two ceiling light points. Coving. Solid oak doors to:

SITTING ROOM. Inset log burning stove with granite surround, granite hearth and attractive classic limestone mantelpiece. Two windows to rear aspect. Two further casement windows to side aspect. Two ceiling light points. Coving. Two wall light points.

FAMILY ROOM / HOME OFFICE Window to side aspect overlooking garden. Further window to opposite side overlooking driveway. Two ceiling light points. Coving. Part obscure glazed external door to front drive.

KITCHEN / DINING ROOM

Kitchen 1½ bowl sink unit with mixer tap. Extensive range of high and low level cupboards and drawers. Rangemaster Toledo two oven range with plate warmer and grill, ceramic five ring hob and warmer to side, stainless steel splash back with suspended stainless steel/glass hood above. Integrated Hotpoint dishwasher. Polished granite work surfaces with similar upstand. Peninsular unit with solid oak butcher block top and breakfast bar. Halogen ceiling down lighters. Coving. Plinth heater. Window to front aspect with views towards farmland.

Dining Area Coving. Ceiling light point. Window to side aspect. Opening into:

GARDEN ROOM Windows along three aspects and double doors to one end opening onto a terrace. Coving. Ceiling light points.

UTILITY ROOM Stainless steel sink unit with mixer tap and drainer. Roll top work surface with cupboards beneath. Recess with plumbing for washing machine and space for dryer. Under stairs storage cupboard with light. Fuse box. Half glazed door to outside. Extractor fan. Oak door to:

CLOAKROOM White suite comprising a pedestal wash hand basin with ceramic tiled splash back and low level WC. Ceiling light point. Coving. Obscure glazed window to side aspect.

FIRST FLOOR

LARGE CENTRAL LANDING Solid oak balustrade continues overlooking stairwell. Window to side aspect with views towards farmland. Access to loft space via hatch. Central ceiling light point. Coving. Solid core oak doors to bedrooms, family bathroom and double oak doors to a large cupboard housing pressurised hot water cylinder and slatted shelving.

PRINCIPAL BEDROOM Window to rear aspect with open views over the playing field. Two further small pane casement windows to side aspect. Ceiling light point. Coving. Oak door into:

En Suite Shower Room White suite comprising a contemporary wash hand basin set into roll top surround, double cupboard beneath. Low level WC with concealed cistern. Folding door into fully tiled cubicle with Mira Flight shower. Extractor fan. Ceiling light point. Coving. Wall light point/shaver socket. Towel radiator. Part ceramic tiled walls.

BEDROOM TWO Windows on two aspects. Ceiling light points. Coving. Oak door into:

En Suite Shower Room White suite comprising pedestal wash hand basin with ceramic tiled splash back. Low level WC. Corner cubicle housing power shower. Light/shaver socket. Towel radiator. Extractor fan. Ceiling light point. Coving.

BEDROOM THREE Window to rear aspect with views over the playing field. Ceiling light point. Coving.

BEDROOM FOUR Window to front aspect. Ceiling light point. Coving.

FAMILY BATHROOM White suite comprising contemporary wash hand basin, cupboard beneath. Low level WC. Panelled bath with part tiled surround and mixer tap/hand held shower attachment. Obscure glazed window to side aspect. Extractor fan. Ceiling light point. Coving. Towel radiator.

OUTSIDE

Access off village road across small tarmacadam area which leads onto a gravelled driveway providing parking and turning space to the front and side of the house. This is screened from the road by a newly built Flemish bond brick wall. There is a brick paviour path leading to the front entrance porch and access to:

GARAGE Braced and ledged oak double doors to front with attractive cast iron hinges. Power and light connected.

THE GARDEN The remaining wrap-round well enclosed garden comprises a natural stove terraces areas linked by paths separating well stocked borders and lawned areas. The garden is well enclosed on all sides by tall weather board fencing with trellis above and trees.

SERVICES

Mains water, electricity and drainage. *Note: No household services or appliances have been tested and no guarantees can be given by Evans and Partridge.*

DIRECTIONS

POST CODE: SO20 6PP.

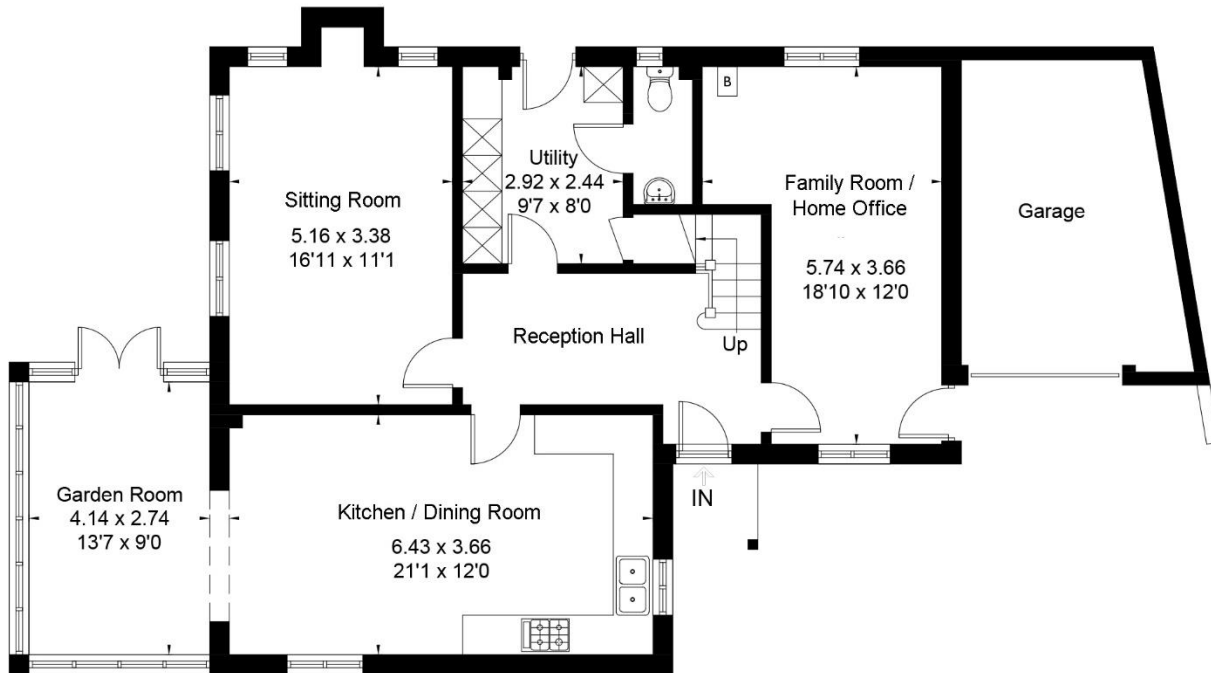
VIEWING IS STRICTLY BY APPOINTMENT WITH EVANS & PARTRIDGE

Tel. 01264 810702

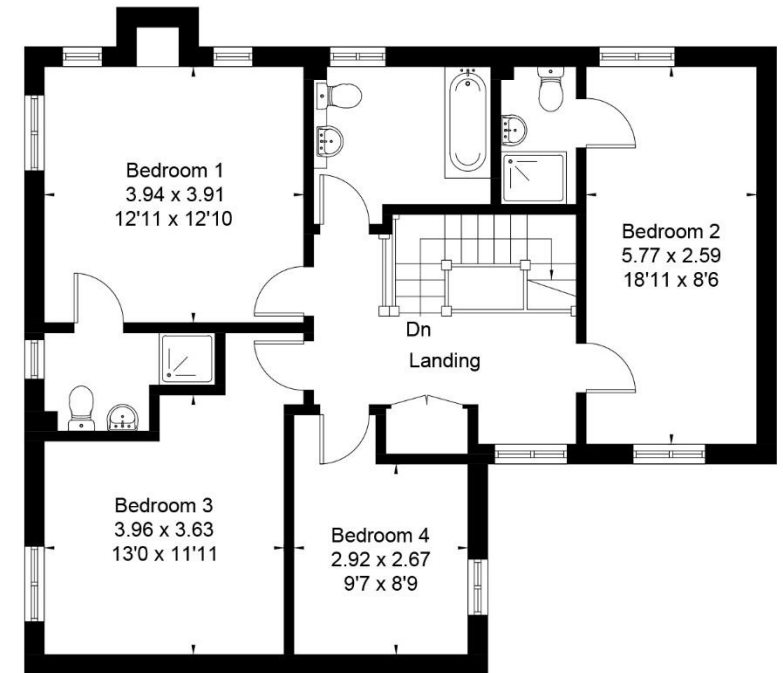
www.evansandpartridge.co.uk

1. These particulars are set out as a general outline only for the guidance of intending purchasers and do not constitute, nor constitute part of, an offer or contract. All statements contained in these particulars as to this property are made without responsibility on the part of Evans & Partridge or the vendors or lessors.
2. All descriptions, dimensions, references to condition and necessary permissions for use and occupation, and other details are given in good faith and are believed to be correct, but any intending purchasers should not rely on them as statements or representations of fact, but must satisfy themselves by inspection or otherwise as to the correctness of each of them.
3. No person in the employment of Evans & Partridge has any authority to make or give any representation or warranty whatever in relation to this property.

Approximate Floor Area = 179.8 sq m / 1935 sq ft
(Excluding Garage)



Ground Floor



First Floor